

THE ARTS CENTER IN ORANGE
PRESENTS

THE
GAGA
Gala

THE GREAT ANTIQUES AND
GLORIOUS ART AUCTION

FRIDAY, NOVEMBER 11, 2011
BEGINS 6:30PM

THE AMERICAN LEGION HALL
IN ORANGE

COUNTRY LIVING IN VIRGINIA



MOUNTAIN GLEN: 225 acres in the Rapidan area of Orange Co. and in the Keswick Hunt with dramatic views of the Blue Ridge. Land is mostly open and fenced for cattle. The house dates to 1895 and is solid brick with 11 ft. ceilings on the main and second floors. House is in need of restoration but is very solid. Located in an area of estate parcels and large protected farms. \$1,700,000



BLOOMINGDALE: A rare offering of one of Orange County's prominent historic homes located in the heart of Somerset. Many recent renovations. Home sits on 14 acres with mature boxwood gardens, pool, and spectacular 360 degree mountain views. Large 19th century bank barn can accommodate horses. \$1,395,000

*For more information please contact:
Justin H. Wiley (434) 981-5528*



FRANK HARDY, INC., REALTORS

PIEDMONT OFFICE

132A East Main Street, Orange, VA 22960

(540) 672-3903 Fax: (540) 672-3906

www.farmandestate.net

Equal Housing Opportunity

THE GAGA Gala



Semi-Antique Persian Hamadan Rug - 3.5' x 5', circa 1930s, "botah" all over design, Donated by Melrose Antiques, www.melrosefineantiques.com

The Arts Center In Orange
129 East Main Street, P.O. Box 13
Orange, Virginia 22960
Phone: 540.672.7311
E mail: theartsorange@aol.com
Website: www.artscenterorange.org

Laurie Holladay Interiors

123 S. Main Street, Gordonsville, VA 22942



www.laurieholladayinteriors.com

Kubota



**PIEDMONT
POWER**

www.piedmontpower.com / Orange, VA
jack@piedmontpower.com
800-252-3612 / 540-672-1111



Husqvarna

The Mission of The Arts Center In Orange is to increase the quality of life in our community by promoting an appreciation for fine contemporary arts in diverse styles and ideologies. This is done by providing: a forum to promote artistic excellence; scholarship and education; a venue for artists and artisans to work, teach, exhibit and sell work; and a place for the community to learn skills, and to participate in and enjoy the arts.

The GAGA Gala is brought to you by:

Presenting Sponsors:

Mr. & Mrs. Ed Harvey, Mr. & Mrs. James H.T. McConnell
and Howard & Martha Zaritsky

Community Partners:

Virginia National Bank, Frank Hardy Realty, Inc., Restaurant Pomme,
Jack Samuels Realty, Piedmont Power, Sedwick Building Supply and
Laurie Holladay Interiors

Event Sponsors:

Mrs. Karla B. Baer, Mr. & Mrs. Greg May, Mr. & Mrs. William Rogers
and Mr. & Mrs. John Sponski

Community Sponsors:

Mrs. Florence Fowlkes, Mr. & Mrs. Porter Goss
and Mr. & Mrs. Brian Hall, Mr. & Mrs. John B. McClure

Supporting Sponsors:

Mr. & Mrs. John Snyder, Gail Babnew & Joel Silverman,
Mr. & Mrs. Dabney Carr, Butch Davies & Marty Moon,
Mrs. Frances Dulaney, Mr. & Mrs. John Faulconer,
Mr. & Mrs. A. Dandridge Gregg, Mr. & Mrs. Dennis Horton,
Mr. & Mrs. Mark Kington, Mason Insurance,
Mr. & Mrs. David Perdue, Mr. & Mrs. Ridgely Porter,
Mr. & Mrs. Michael Quinn, Mr. & Mrs. Rod Sedwick,
Mrs. Alyson Sparks, Ms. Charlotte Tieken, Mr. & Mrs. Mark Warren,
Lee Wouters & Pat Tackett

The Arts Center in Orange, Inc. is a non-profit corporation (501c3).
Your contribution is tax-deductible to the extent of the law.

Funded in part by:



AUCTION RULES

PURCHASE AUCTION TICKETS IN ADVANCE Tickets are \$50 and may be purchased at The Arts Center In Orange, 129 E. Main St., PO Box 13, Orange, VA 22960, ph. 540.672.7311.

BIDDER REGISTRATION Auction guests will be pre-registered and will receive a bidding number and catalog upon check-in at the guest registration table. Those interested in leaving an absentee bid or bidding over the telephone should contact The Arts Center In Orange at least two days prior to the sale at 540.672.7311 or e-mail us at: gagagala11@aol.com. To preview items before the day of the auction, contact Julie Jackson at 540.672.7311, or gagagala11@aol.com.

SILENT AUCTION Silent auction items, numbered beginning with 201, are displayed on tables in the reception room. Near each item is a bidding sheet upon which you can record your bid, including your paddle number and last name. Successive bids should be written below each previous bid. The form includes the minimum bid to open and the minimum advance. Your bid must be at least the minimum advance above the preceding bid to be valid. Silent auction bidding will be closed promptly at 8:30 p.m. when bid sheets will be collected and a list of successful bids compiled for check out. If buyers have questions, they should contact the cashiers in the check-out area.

LIVE AUCTION Beginning at 7:30 p.m., auctioneer Roger Gibson will conduct the live auction with numbered items beginning with number 101. All bidders must use their registered bidding numbers. Winning absentee bidders will be notified during the week following the auction. If the item needs to be shipped, the winning bidder is responsible for the cost of shipping and handling.



1780 Tall Case Clock - 7' tall, from England, Signed "Lister", Chimes Hour and Half Hour - Donated by John & Abigail James



Civil War Era Oil
Lamp - Donated
by John & Abigail
James

RESERVES AND CONSIGNMENTS A few items in this auction carry conservative reserves. A reserve is a minimum price the object must bring before it can be sold. Bidding on items with reserves will open with the Opening Bid listed.

AUCTION NOTES Before leaving, successful bidders should pay at the check-out/registration table.

GENERAL NOTES All items must be taken by the successful bidders at the end of the auction. Winning bidders are responsible for all shipping and handling costs. If pick-up is not possible after the auction, arrangements may be made with the cashier. The Arts Center In Orange cannot be responsible for items left overnight. **ALL SALES ARE FINAL.** There will be no exchanges or refunds for items. While every reasonable effort has been made to describe each item correctly, all items and services are sold as is.

Office (540) 672-1035
Fax (540) 672-0750

Plumbing/Electrical (540) 672-2104
Fax (540) 672-2834

Sedwick Building Supply

Paint * Paneling * Lumber * Vinyl * Block * Hardware
Complete Line for the Contractor and Homeowner

221 Byrd Street, Orange, VA 22960



Glass Fronted Bookcase - With drawer and adjustable shelving. Donated by Ed & Ada Harvey



Antique Napkin Rings- Silver/Silver plate, one monogrammed "R", one blank and one "Dorothy"
Donated by the James Peyton Estate.

Square Walnut Occasional Table- Table has sculpted apron and 1 drawer with knob pull, 22" Square, Height: 29 1/2" Donated by Fred Karns & Susan Winslow



Oak Frame Screen - Early 1900s oak screen, from a women's dormitory at Pine Manor College, Wellesly, MA
Height: 54 1/2", three 20" Wide Panels
Donated by Barbara Collins



Antique Tiger Painting -
Framed Oil painting by Polish
Artist - Height: 16 1/2 x Width:
20 1/2 - Donated by Karla Baer

**Chinese Gold Thread
Embroidered Wall Hanging in
Frame -** Framed 19th century
Chinese textile features a
raised, embroidered dragon and
tiger design of gold thread.
Height: 41" x Width: 21"
Donated by Karla Baer



Carved Walnut Angel Shelf - German,
Hand Carved, Wooden Angel Wall Shelf
made of Walnut - Height: 14" x Width: 12" -
Donated by Karla Baer



**Pair of Cross
Stitched Pillows -**
Stitched by the
Directress of
Stratford Hall, 40 - 50
years ago - Donated
by Frances Dulaney



Early Capo di Monte Figural Porcelain Parrots -
Set of 2 - Height: 13" - Donated by Phil & Susie
Audibert

Titanic Era Deck Chair-
Donated by Lavinia Phillips



Jack Samuels Realty

"Established 1913"

138 East Main Street
Orange, VA 22960

(540) 672-3233

www.jacksamuels.com



"Dick and Jane" Quilt -
Baby Quilt of vintage fabric -
Height: 48" - Width: 36" -
Donated by Becky Grymes

Vintage Doggy Doorstop -
hand painted, wooden-
Height: 12" - Donated by
Carole Dunn



McGuffey Readers - 1920s, used at Grymes,
names inside of former students you may
recognize! Donated by Mr. & Mrs. Robert G. Davies



"Barboursville Barn" - Oil on Linen -
Height: 8" x Width: 6" - Artist: Nancy
Wallace, www.nancygallery.com





**Dusty Strings D500 chromatic series
Hammered Dulcimer** - Bottom rail: 45 inches Top rail: 18-1/2 inches - Height: 20 inches Thickness: 4 inches - Donated by Doris Ann Dawson

**Bavarian Hunter Woodcarving with
Matching Stein** - Bird Hunter with dog carved from a single block with beautiful vintage stoneware lidded beer stein crafted in West Germany. Detailed painted relief includes a hunter and family. Stein Height: 9" x Width: 5" (including handle). Carving Height: 20" - Donated by Karla Baer
OPENING BID: \$1500



Louise McConnell Ceramic Bowl - Hand Painted Pottery, Fox Head in Center of Bowl, Diameter: 10" - Donated by Anonymous





Ceramic Cat Platter -Width: 14" x
Height: 10", Artist: Solveig Cox,
www.catpottery.com

Pair of Fox Prints -Newly
Framed, by Keswick artist Lee
Gilde, Height: 22" x Width: 18"
Donated by Frances Dulaney

"Bee" Acrylic on wood panel,
Height: 6" x Width: 6" - Artist: Ed
King, www.artfirstgallery.com



Antique Walnut Spice Chest - Sliding
beveled top, compartmentalized drawers,
locks and original pulls, Height: 7 1/2" x
Width: 9" x Depth: 13 1/2" Donated by
D.C. Browning

Pair of Early VA Primitive Chairs -
Ladderback, age signs, Pegged Slats,
Mecklenburg County? Donated by Mr. &
Mrs. Robert G. Davies OPENING BID:
\$35 each





"Tree on Fox Island" Crescent Beach, NS - Collage on paper, Height: 4" x 6", Artist: Kathleen Craig, www.kcraigart.com

Pair of Vintage Garden Chairs - Two decorative, vintage high backed garden chairs of French Origin, Donated by Lionshare Antiques, www.lionshareantiques.com

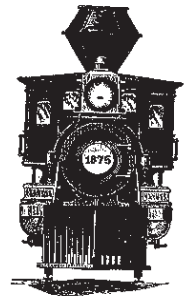


"Pears, Knife, Sketchbook" - Still life oil on panel, Height: 8" x Width: 10" Artist: Kathleen Craig, www.kcraigart.com

"Cotton Pickers" - Primitive Folk Art, oil by Cheryl Woll, Height: 11" x Width: 14" Donated by Mary Jane Shackelford



Private Showing - A private showing of British Railway steam locomotive models custom built by Mr. Wilfred Hall during his 88 year lifespan. Impressive original blueprints, also on display. Libations to follow. Limit 10. Date and Time TBA. Donated by Brian & Frankie Hall



"Beach Access" - Framed and Matted acrylic by Madison artist, Lou Messa - Height: 14" x Width: 22" Donated by Frances Dulaney



"Seaside" - Framed and Matted acrylic by Madison artist, Lou Messa - Height: 22" x Width: 29" Donated by Frances Dulaney



Catherine Murphy, American (born 1946)
Still Life, Self Portrait, Landscape,
lithograph, 1976. Edition 22 of 50. 12 3/4 x
11 1/16 inches. Signed and dated in pencil.
Donated by Florence Fowlkes



Hand-Painted Wooden Fox Tray -
Height: 14.5" x Width: 21.5"
Donated by Felicity Blundon



Antique Pewter Sugar & Creamer -
1840 - 1860s, Leonard, Reed &
Burton, Height: 5 1/2" and 5"
Donated by Anonymous



High Back Rocker - Black enamel with gold stenciled design.
Height: 42" Donated by Woody & Frances Purcell



"Flower" - Quilted wall hanging. Height: 20" x Width: 18"
Artist: Carole Dunn

"Elvis" - Elvis is a member of "Kitty's Chicken Littles" Height:
4" x Width: 4", with 5" easel. Artist: Kitty Dodd,
www.kittydodd.com



Hand Tinted Lithograph - Features a young man, framed with reverse painted glass
mat. Height: 20" x Width: 24" Donated by Pen & Suzie Bresee

Set of 6 Sheffield Silver-Plated Plates
Donated by John & Abigail James



"Heading In" - Landscape oil on canvas, framed, Height: 11" x Width: 14" Artist: Jeanne Grimsby, www.viovio.com/jeanneg



Set of 8 1950's Lacquerware Rice Bowls & Plates from Thailand - Donated by Carol Hallman



"Steam" - Framed giclee photograph taken at the Somerset Steam and Gas Pasture Party. Height: 22" x Width: 28" Artist: John Strader, www.printroom.com/pro/johnstrader



"Egg of the Day" - 9/09/11, Photograph, Framed and Matted. Find "Egg of the Day" on Facebook! Height: 11"xWidth: 14"Artist: Bridget Bryant

"Santa in the Kid's World He Only Teaches Kids To Be Good" - Dementional Art by Outsider Artist, Howard Finster (1916 - 2001). Height: 28" x Width: 9 1/2" Donated by Anonymous





Antique Pewter Glass Bottomed Measuring Cups - 19th Century - VERY old - Set of four. Height: 2.5, 2.25, 2, 1.75 inches. Donated by Anonymous

Heavy Antique Pewter Glass Bottom Tankard - Made in London by the famous Crown and Rose firm. Height: 4 3/4" Donated by Anonymous

Antique Pewter Plates - Set of Four, Scalloped Edges, Hallmarked (differing), VERY old. Diameter: 9 1/2" Donated by Anonymous

"October Morning" Virginia Landscape - Oil on canvas. Painted in plein air on the Shenandoah River near Grottoes, VA. Height: 18" x Width: 24" Artist: Ramey Campbell, www.artsites.org/Ramey

"Best Friends" - Small oil on paper of two Somerset cows. Height: 5" x Width: 6" Artist: Ramey Campbell, www.artsites.org/Ramey



Antique Pewter Pair of Candlesticks -
Hallmark includes Danmark "Just", 2711.
Height: 6 1/2" Donated by Anonymous



Cut Glass Compote - Heritage cut crystal
compote on a pedestal base, excellent
condition. Height: 13" Donated by
Anonymous



"A Complementary View of Orange County" -
Serenity in a country setting, acrylic on paper.
Height: 4" x Width: 6" Artist: Lee Nixon, <http://lee-nixon.artistwebsites.com/>



"Land of Noriste & Visitors of Another World" -
Dementional Art by Outsider Artist, Howard Finster
(1916 - 2001) Height: 11 x Width: 16 1/2 x Depth: 3
1/2" Donated by Anonymous

35,000.00 WORKS SINCE 1974
BY DIMENSION 7x16x3/4 FROM 048
SEPT 14 1992 QED 5LE13
DEMENTIONAL ART
PAINT AND WOOD AND
OTHER GLASS ART
THE PIECE YOU WILL ENJOY.  1992-00





Woodberry Forest Captain's Chair - Boone Captain's Chair in Black Enamel with Gold Woodberry Forest School Emblem. Donated by Woody & Frances Purcell



"Clouds Over the Blue Ridge" - Watercolor, Height: 6" x Width: 4" Artist: Chee Ricketts, www.cheeklutricketts.com



Buffalo - Height: 22" x Width: 20" Donated by Karla Baer

Montpelier: Recollections of Marion duPont Scott - Boxed, leather-bound, #29/500, signed by Mrs. Scott. Donated by Anonymous





"Untitled" - Acrylic painting of a hound dog, Height: 6" x Width: 6" Artist: Lucy Colby

"The Wild Bunch" - Oil on canvas panel. Lots of wild fruit all around my home, great fun to pick, great fun to eat as I sketch or paint. Height: 6" x Width: 4" Artist: David Golden



Mahogany Framed Mirror - George III Style, Mahogany Wall Mirror, Height: 41" x Width: 20" Donated by Woody & Frances Purcell

Tiger Maple Demilune Table - 19th century, refinished in 1922, end section from a banquet table. Height: 28"x Width: 48" Donated by Anonymous





Roseville "Magnolia" 181-8"Vase - Green, Raised Hallmark, Height: 8" Donated by Mr. & Mrs. Robert G. Davies



Woven Wrap - From cotton purchased at the close of the Orange Silk Mill, 29" x 84" Woven by Frances Colvin



Bronze Sun Dial - VA Metalcrafters, Bronze, Height: 5 1/2" x Length: 13 3/4" Donated by Woody & Frances Purcell

Primitive New England Blanket Chest - Early 1800s, Maple, Edging around top is lacking mitered corners, "One Board" Chest, Height: 34" x Width: 36" x Depth: 18" Donated by Mr. & Mrs. Robert G. Davies OPENING BID: \$250





"Snakes" - American Folk Art by Richard Burnside, primitive works painted in oil based enamel on flattened grocery bags. Height: 16 1/2" x Width: 37 1/2" Donated by Al Marzorini



"The Crucifixion" - American Folk Art by Richard Burnside, vivid colors and repeated dot patterns recall aboriginal designs. Oil based enamel on flattened grocery bags. Height: 16 1/2" x Width: 37 1/2" Donated by Al Marzorini

"The Red Checkered Tablecloth" - Framed oil, from a quiet place. Height: 30" x Width: 30" Artist: Janice Breeden, <http://mcguffeyartcenter.com/2009/10/janice-breeden/>





"Three Grays" - Framed Photographic Print on Archival Paper, Height: 9 1/2" x Width: 14" Artists: Phil & Susie Audibert, www.audibertphoto.com

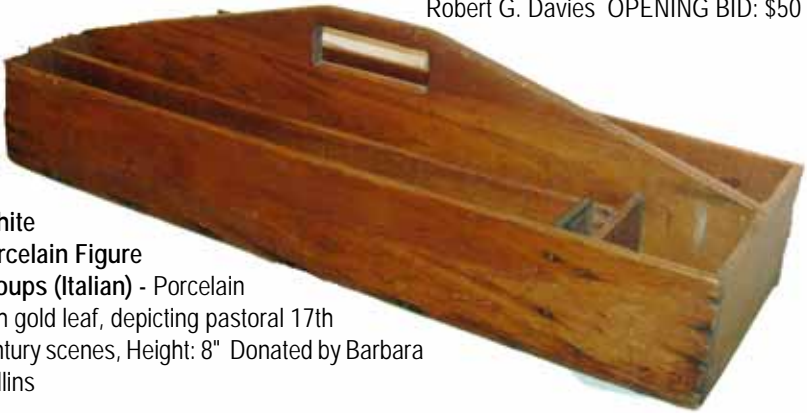
"The Art of Foxhunting" (not pictured)- A book of photography by Phil & Susie Audibert, 168 pges of hunting and horses, foxes and hounds. This book is SOLD OUT. Don't miss your chance to get the LAST copy! Artists: Phil & Susie Audibert, www.audibertphoto.com

"Winter Blue" - Acrylic on Illustrator Board, Height: 4" x Width: 6" Artist: Linda Boudreau Montgomery, www.cornerhousegalleryva.com

"From Memory" - Oil on Illustrator Board, Height: 8" x Width: 6" Artist: Lou Messa, www.loumessa.com



Primitive Tool Box - Antique, Compartmentalized, Height: 6" x
Width: 11" x Length: 35 1/2" Donated by Mr. & Mrs.
Robert G. Davies OPENING BID: \$50



White Porcelain Figure Groups (Italian) - Porcelain with gold leaf, depicting pastoral 17th century scenes, Height: 8" Donated by Barbara Collins



"Unconquered Spirit" - Signed & Numbered (7/50) Mort Kunstler Giclee Print on Canvas A.P. Hill, Lee & Longstreet in Orange, VA, August 1863, Orange Courthouse, Height: 21" x Width: 31" Donated by Anonymous

4 Mort Kunstler Prints on Canvas(Not pictured) - Civil War Scenes. Height: 10" x Width: 12" Donated by Woody & Frances Purcell





"Legacy's Morning" - Framed Color Photograph, Height: 16" x Width: 20" Artist: Eleszabeth E. McNeel, www.angleofreposephotography.com

Two Antique Crystal Vases - Val St. Lambert (?) minor damage to underside of foot. Donated by Don and Vibeke Ober



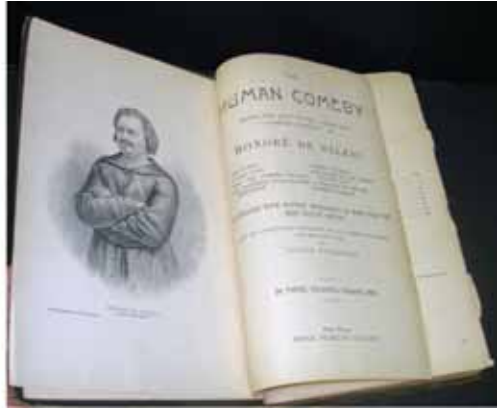
"Untitled" - Framed Asian Landscape, Watercolor on very fine handmade paper, by Howard Uphoff. Height: 27" x Width: 23" Book: Howard Uphoff, A Watercolor Collection, signed & dated. Donated by Karla Baer



"Beyond the Path" - Pencil on Bristol Vellum, Height: 4" x Width: 6" Artist: Clinton Helms, www.candearststudios.com



“Early Morning” - Acrylic, Landscape,
 Height: 4" x Width: 6" Artist: Susan
 Garnett, http://vapiemontarts.com/artists/susan_garnett



The Human Comedy - Honore de Balzac - 1800s, French,
 Donated by Mr. & Mrs. Robert G. Davies



“A Fox-Hunter’s Dream” and **“A Racing Nightmare”** (not pictured)
 - Reproductions of the popular engravings based on A.C. Havell’s 1890 paintings, elegantly matted and framed in gold, Height: 34 x Width: 27” framed. Donated by Mr. & Mrs. Charles H. Seilheimer, Jr.



Victorian Brass Fern Stand - 22" tall.
Donated by John & Abigail James

"Mother and Daughter" - Mixed Media, Height: 6" x Width: 4" Artist: Susan Krieg, www.kriegartstudio.com



"Umbrian Landscape" - Watercolor, Stone houses, red tiled roofs, warm dreams, colors, pencil trees, Dr. Seuss pines. Height: 4" x Width: 6" Artist: Michelle Powell, www.artistpowell.com



Footbath - Hand Painted, Porcelain, Diameter: 14"
Donated by Mr. & Mrs. Robert G. Davies





"Greenbriar River" - Oil on Canvas, Height: 9 1/4" x 21 1/2" Artist: Tom Tartalino, www.tomtartalino.com



Original \$100 Confederate Note dated Feb. 17, 1864 - Bust of Lucy Holcombe Pickens facing right, Vignette of Two Confederate Soldiers at left, Bust of George Wythe Randolph, Secretary of War in 1862 at right. Donated by Page Sullenberger



"Just Me" - Framed oil painting. Height: 4" x Width: 6" Artist: Elaine Hurst, www.elainehurst.com

Bidder #: _____

Date: _____

For office use only

ABSENTEE BID FORM

TERMS: Check or credit card (VISA, MasterCard, American Express, or Discover). Offerings are subject to error, and all goods are sold in "as is" condition. Absentee bids are executed as a courtesy, and The Arts Center In Orange will not be responsible for any errors or failure to execute bids. All other conditions of sale listed in this catalog apply.

NAME: _____

ADDRESS: _____

CITY: STATE: _____ ZIP: _____

PHONE (home): _____ (cell): _____

E-MAIL: _____

Page Number	Brief Description	Maximum Bid (US\$)
_____	_____	_____
_____	_____	_____
_____	_____	_____
_____	_____	_____
_____	_____	_____
_____	_____	_____
_____	_____	_____

I agree to the terms stated above and in this catalog.

SIGNATURE: _____ **DATE:** _____

Please return a signed copy of this form to confirm your bid(s) by FAX or mail no later than November 4, 2011.

The Arts Center In Orange, 129 E. Main St, POB 13, Orange, VA 22960
Ph. 540.672.7311, FAX 540.672.3141, theartsorange@aol.com



Pomme

115 South Main Street
Gordonsville, VA 22942

Tel: (540) 832-0130

Restaurant



Choose the bank that invests in our community.

We believe in serving the interests of our entire community by supporting the visions of small businesses, providing families with savings and investment choices, and sponsoring local events.

It's all about people and always will be.

 Equal Housing Lender. Member FDIC


VIRGINIA
NATIONAL
BANK®
vnb.com